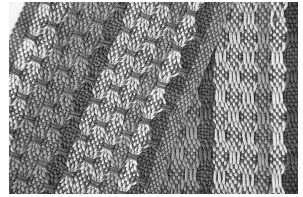


#2-08 LEARNING RIGID HEDDLE WEAVING PICK-UP TECHNIQUES

Robin Lynde Rigid heddle weaving does not have to be limited to plain weave. Learn to weave warp and weft floats using pick-up sticks and expand on these techniques to create additional lace designs. Use of supplementary weft expands the design potential even more with creation of honeycomb and deflected weft patterns. Participants will weave samplers using these techniques. They will also learn to make heddle rods to replace one or more pick-up sticks to facilitate weaving patterns that call for more than one pick-up stick. *Prerequisites: Students must know basic operation of a Rigid Heddle Loom and be able to weave plain weave. Materials Fee: none. Instructions and materials list provided after registration.*



#2-09 KNITTING WITH FABRIC STRIPS

Lorna Miser Open a whole new source of knitting “yarns” by cutting fabric strips. Learn many ways to cut the fabric and join ends plus tips on what types of fabrics work best. Find out what tools are available to make the cutting faster, easier and more accurate. Then try knitting with different widths of strips and different fabric types. You’ll get some practice in class by making a small pouch or purse. I’ll also discuss what kinds of designs work best with fabric knitting and how to combine it with other yarns and textures for even more stunning results. *Prerequisites: basic knitting skills. Materials Fee: none. Students bring 1 yd. of cotton fabric (batik preferred), assorted needles (US 8-13), scissors, ruler or cutting matt, and rotary cutter - optional.*



#2-10 KUMIHIMO - PAINTING WITH BEADS

Karen Huntoon Painting with Beads is a playful approach to kumihimo and opens all kinds of doors for endless creativity. This class gives students the opportunity to combine designing, beading and braiding. Students will learn how to “drop” beads and design a beaded necklace with different sequences of patterns and colors. Students will start (some may finish) an 8 strand Painting with Beads necklace. *Level of Expertise: Kumihimo 101; must have experience with braiding on a kumihimo disk. Some experience with “dropping” beads is helpful. Student Materials Fee: \$18 includes Toho or Miyuki seed beads, C-Lon cord, wide eye needle, end caps. Kits will be available in a variety of color ways. Materials list provided after registration.*

